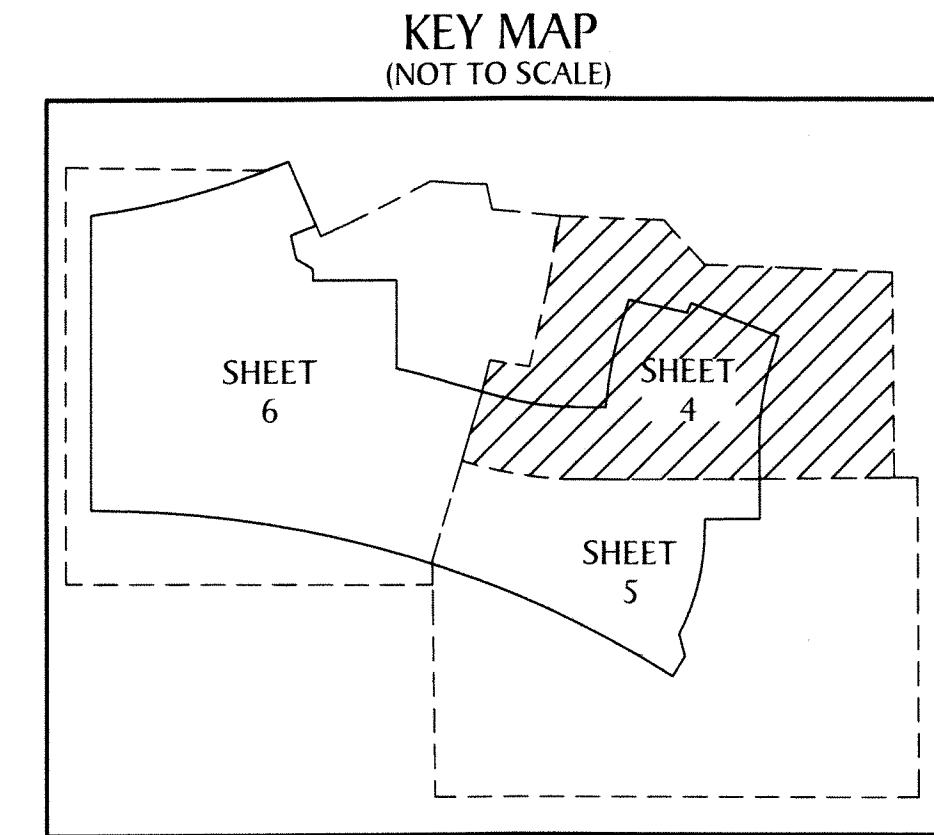
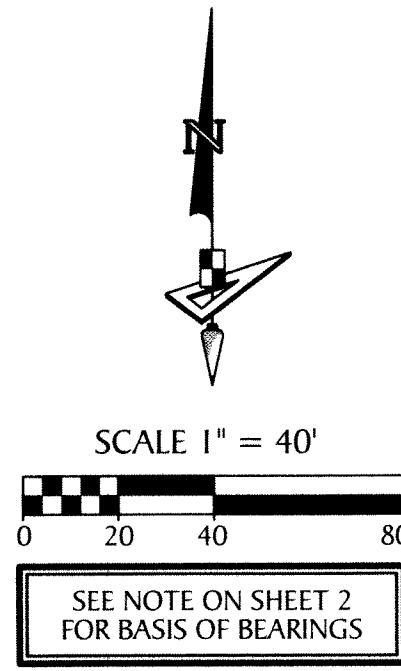
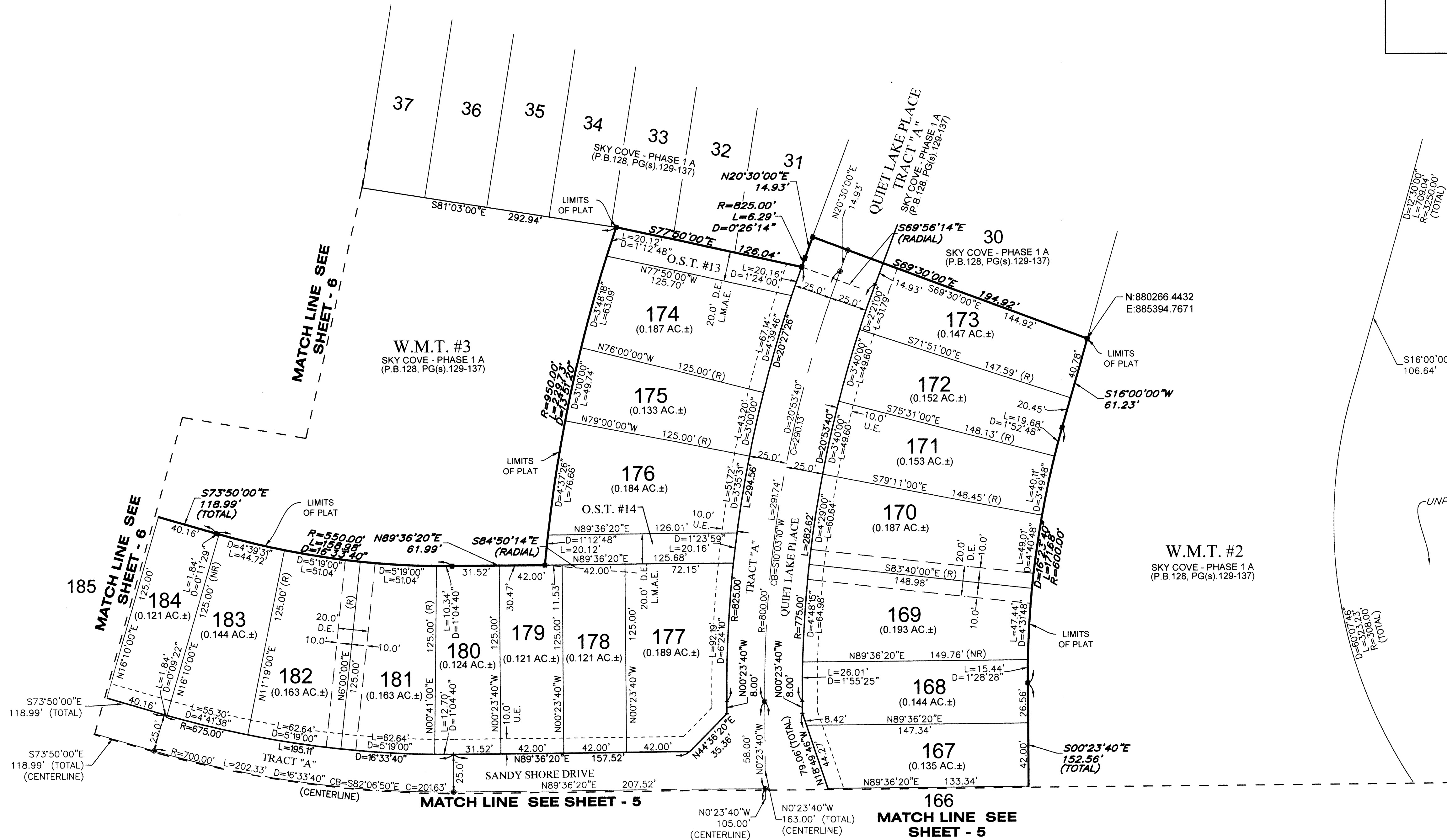


SKY COVE - PHASE 1 B

A SUBDIVISION IN SECTIONS 1 AND 12, TOWNSHIP 43 SOUTH, RANGE 40 EAST,
CITY OF WESTLAKE, PALM BEACH COUNTY, FLORIDA, BEING A REPLAT OF TRACT "M",
SKY COVE - PHASE 1 A, PLAT BOOK 128, PAGES 129 THROUGH 137, INCLUSIVE, PUBLIC
RECORDS OF PALM BEACH COUNTY, FLORIDA



165



LEGEND

- P.B. ----- PLAT BOOK
- D.B. ----- DEED BOOK
- PG./PG(s) ----- PAGE(s)
- W.M.T. ----- WATER MANAGEMENT TRACT
- O.S.T. ----- OPEN SPACE TRACT
- R.P.E. ----- RURAL PARKWAY EASEMENT
- P.B.C. ----- PALM BEACH COUNTY
- NAD ----- NORTH AMERICAN DATUM
- U.E. ----- UTILITY EASEMENT
- D.E. ----- DRAINAGE EASEMENT
- L.M.A.E. ----- LAKE MAINTENANCE ACCESS EASEMENT
- R ----- RADIUS
- L ----- ARC LENGTH
- D ----- DELTA ANGLE
- CB ----- CHORD BEARING
- C ----- CHORD
- (R) ----- RADIAL
- (NR) ----- NON-RADIAL
- 1-43-41 ----- SECTION-TOWNSHIP-RANGE
- ----- FOUND PERMANENT REFERENCE MONUMENT
- ----- SET PERMANENT REFERENCE MONUMENT
- ----- PERMANENT CONTROL POINT
- R/W ----- RIGHT-OF-WAY